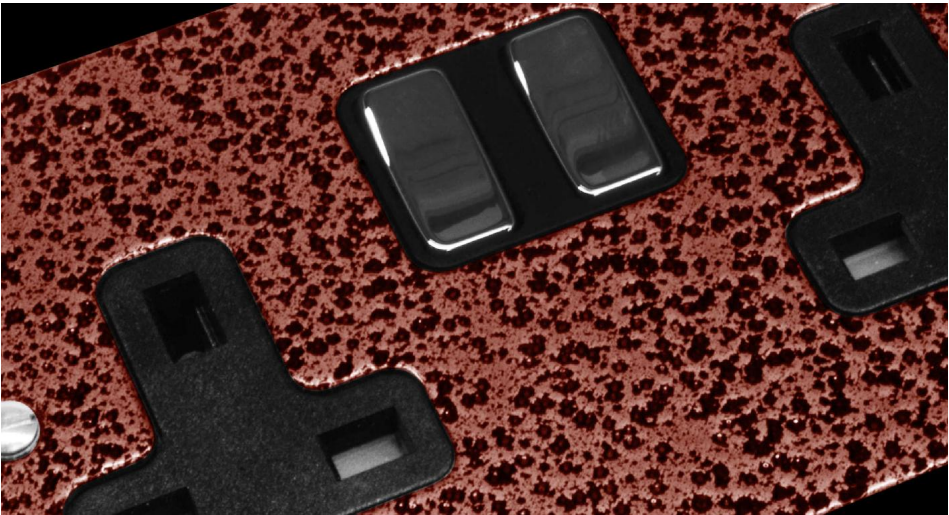


Flat Plate Beaten Metal Copper

TV Socket
1 gang television co-axial Copper



COPTV1

1 gang television co-axial Copper
Quicklink: Q25A2

The **Flat Plate Beaten Metal Copper** range has a hard wearing, dual coloured coating finish with a black trim and black insert as standard.

General

Colour Copper
Construction Aluminium

Dimensions

Height 86mm
Plate Depth 2mm
Width 86mm

Electrical

Voltage 240V