

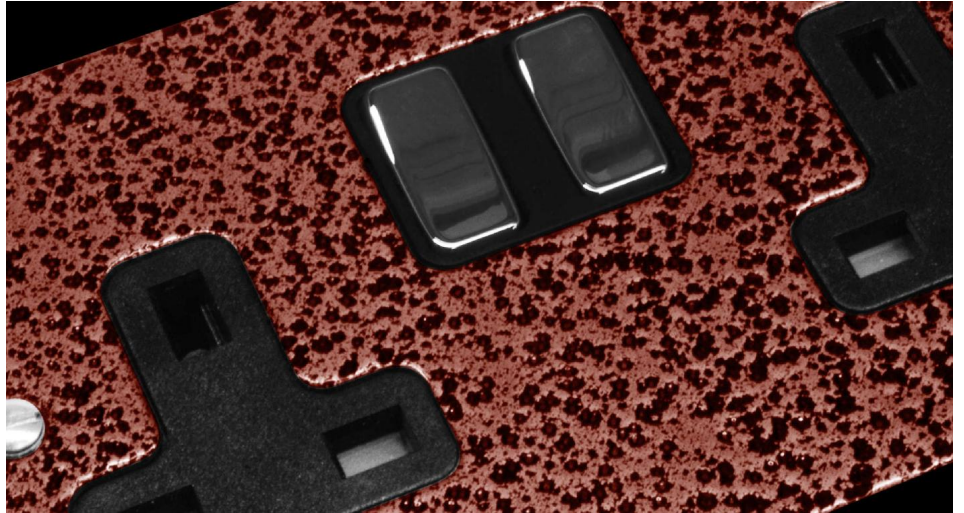
# Flat Plate Beaten Metal Copper

TV Socket

1 gang television co-axial Copper



**MR. RESISTOR®**  
Lighting Specialist Est. 1968



## COPTV1

1 gang television co-axial Copper

Quicklink: Q25A2

The **Flat Plate Beaten Metal Copper** range has a hard wearing, dual coloured coating finish with a black trim and black insert as standard.

### General

Colour	Copper
Construction	Aluminium

### Dimensions

Height	86mm
Plate Depth	2mm
Width	86mm

### Electrical

Voltage	240V
---------	------