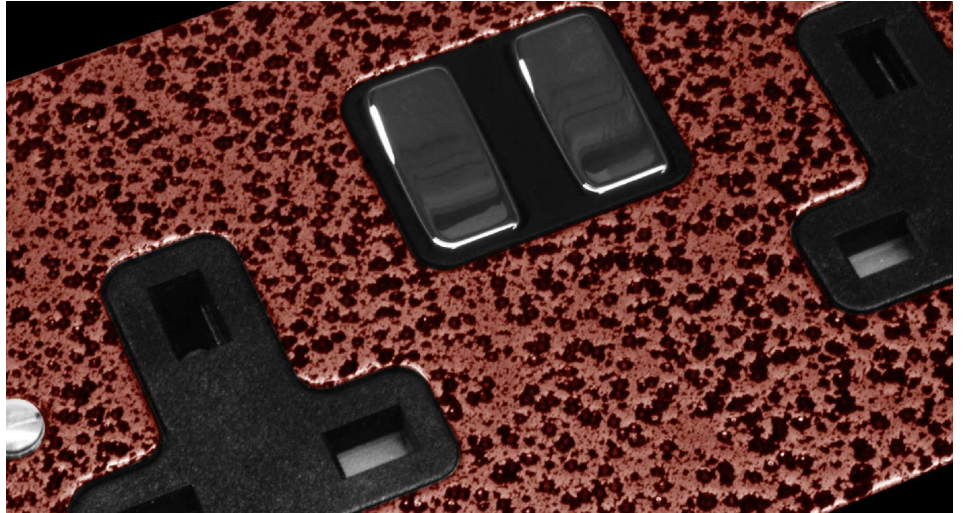


# Flat Plate Beaten Metal Copper

Rocker Switch

1 gang intermediate Copper



## COPRSW1 INT

1 gang intermediate Copper

Quicklink: Q252F

The Flat Plate Beaten Metal Copper range has a hard wearing, dual coloured coating finish with a black trim and black rocker insert as standard.

### General

Colour Copper  
Construction Aluminium

### Dimensions

Height 86mm  
Plate Depth 2mm  
Width 86mm

### Electrical

Voltage 240V