

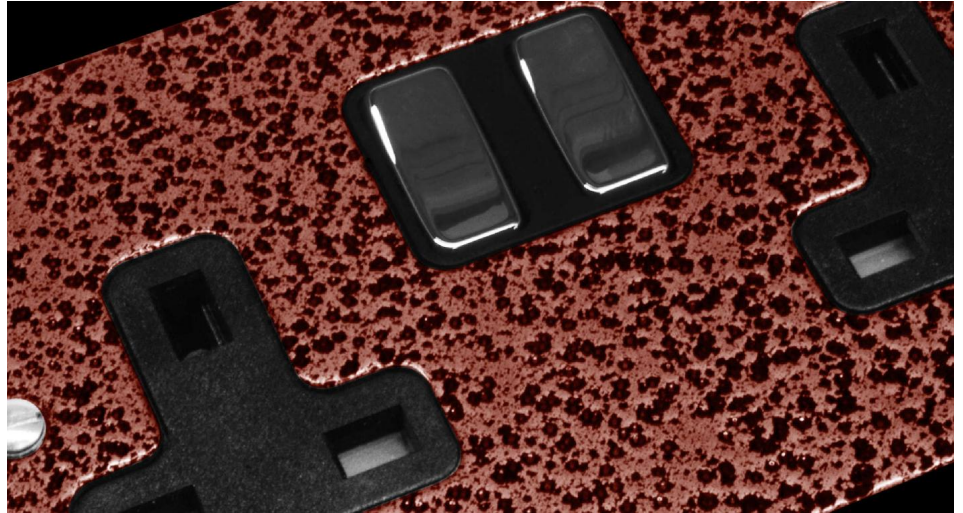
# Flat Plate Beaten Metal Copper

Rocker Switch

1 gang intermediate Copper



**MR. RESISTOR**<sup>®</sup>  
Lighting Specialist Est. 1968



## **COPRSW1 INT**

1 gang intermediate Copper

Quicklink: Q252F

The Flat Plate Beaten Metal Copper range has a hard wearing, dual coloured coating finish with a black trim and black rocker insert as standard.

### **General**

Colour Copper  
Construction Aluminium

### **Dimensions**

Height 86mm  
Plate Depth 2mm  
Width 86mm

### **Electrical**

Voltage 240V