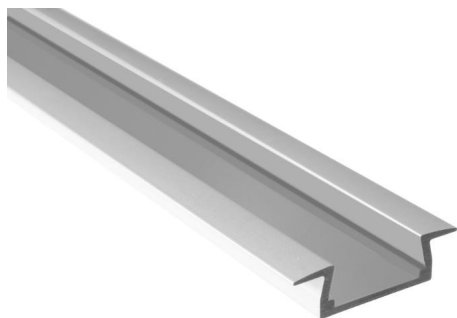


Micro LED Extrusion Profile - Cabinet and Cove

Micro Recessed LED Tape Extrusion Profile

Anodised Aluminium 2070mm



MICRO K AN2.07M

Anodised Aluminium 2070mm

Quicklink: Q2493

General

Colour	Aluminium
Construction	Anodised Aluminium

Dimensions

Depth	6mm
Length	2070mm
Minimum Depth	6mm
Width	22mm

The **Micro Surface Extrusion Profile** comes in 1m or 2m lengths and is used to house LED tape. For creating lighting fixtures recessed in furniture boards.

Key Features

- No need to cut covers to fit the end caps
- Minimum profile size for a 0,39" / 10 mm LED strip
- Modern design

Parts Required

Extrusions

As many lengths of extrusion can be used as is desired. Any 1m or 2m piece can be positioned end to end with each other to make an unlimited distance.

Endcap

An Endcap is required for each circuit of extrusions being used. It is positioned on the end of the very last extrusion in the circuit and is used to stop dust from and moisture from interfering with the electrical components.

Powerend

An Powerend is required for each circuit of extrusions being used. It is positioned on the very first extrusion in the circuit and serves the same purpose as the Endcap. The powerend has a hole in the centre which allows a cable to be fed through to power the strips.

Diffuser

A diffuser is used to give the light a more even blend. Simply purchase the same amount of diffusers as you did with extrusions.

Will fit any tape with a maximum width of 10mm.

This extrusion has been anodized.

Micro LED Extrusion Profile - Cabinet and Cove

Micro Recessed LED Tape Extrusion Profile
Anodised Aluminium 2070mm

