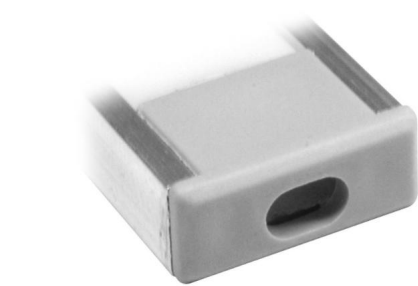


# LED Tape Extrusion Profile Accessories

Micro Surface Power End Cap  
Grey

---



## MICRO U POWEREND

Grey  
Quicklink: Q1EE1

---

### General

Construction      Plastic

### Dimensions

Depth              6mm  
Width              12mm

The **Micro Surface Power End** is used in conjunction with the *Micro Surface Extrusions*.

Its purpose is to seal up the starting end of the extrusion, whilst leaving a small hole to allow a cable to be inserted through to the first piece of LED Tape. This is to ensure small objects such as dust cannot enter the fitting to interfere with the electrical components inside.

Only 1 power end is required for each circuit of LED Tape. This means that if you buy 2 x 2m of extrusion, you would only need a power end on the final piece.

---