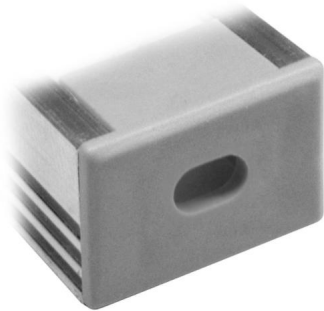


# LED Tape Extrusion Profile Accessories

Maxi Surface Power End Cap  
Grey

---



## MAXI U POWER END

Grey  
Quicklink: Q1EE0

---

### General

Construction      Plastic

### Dimensions

Depth                12mm  
Width                16mm

The **Maxi Surface Power End Cap** is used in conjunction with the *Maxi Surface Extrusions*.

Its purpose is to seal up the starting end of the extrusion, whilst leaving a small hole to allow a cable to be inserted through to the first piece of LED Tape. This is to ensure small objects such as dust cannot enter the fitting to interfere with the electrical components inside.

Only 1 power end is required for each circuit of LED Tape. This means that if you buy 2 x 2m of extrusion, you would only need an endcap on the final piece.

---