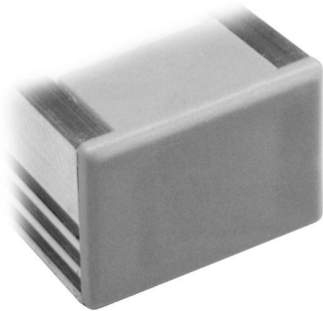


LED Tape Extrusion Profile Accessories

Maxi Surface Endcap
Grey



MAXI U END

Grey
Quicklink: Q1ED4

General

Construction Plastic

Dimensions

Depth 12mm
Width 16mm

The **Maxi Surface Endcap** is used in conjunction with the *Maxi Surface Extrusions*.

Its purpose is to seal up the furthest end of the extrusion to ensure small objects such as dust cannot enter the fitting to interfere with the electrical components inside.

Only 1 endcap is required for each circuit of Tapelight. This means that if you buy 2 x 2m of extrusion, you would only need an endcap on the final piece.
