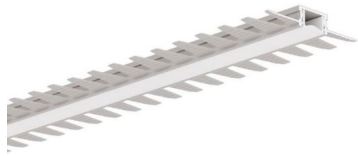


# HR-Slim-KOZ LED Extrusion Profile - Plaster In

HR-Slim-KOZ Bending LED Ceiling and Wall Extrusion Profile  
Aluminum 2000mm



**MR. RESISTOR**<sup>®</sup>  
Lighting Specialist Est. 1968



## HR-SLIM-KOZBD 2M

Aluminum 2000mm  
Quicklink: Q6F3A

### General

Colour Aluminium  
Construction Aluminium

### Dimensions

Height 10mm  
Length 2m  
Width 18.8mm

HR-SLIM-KOZ-BD LED Profile is a slim, recessed aluminium profile designed to create continuous, seamless lines of light across surfaces. It allows smooth transitions from floor to wall and ceiling, delivering uniform illumination without visible LED points—ideal for modern architectural lighting.

Perfect for residential and commercial interiors, this profile is installed in drywall and can be plastered over for a clean, integrated finish. It supports flexible, curved lighting designs (with professional bending) and offers optional high-level sealing (up to IP65/IP67 - **IP67 sealing can be achieved using silicone sealing**), making it suitable even for demanding environments like bathrooms or spa areas

