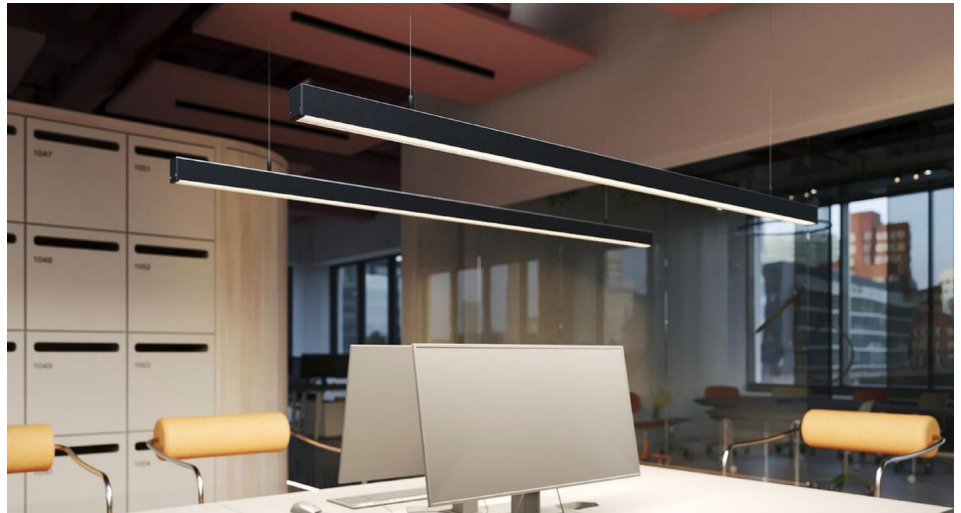
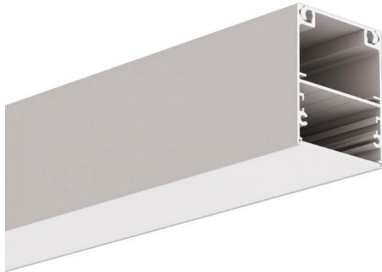


# Inter-Plus LED Extrusion Profile - Ceiling

Inter Plus LED Tape Extrusion Profile  
Anodised Aluminium 3000mm



**MR. RESISTOR**<sup>®</sup>  
Lighting Specialist Est. 1968



## INTER-PLUS ANOD3

Anodised Aluminium 3000mm  
Quicklink: Q6E3B

### General

Colour Aluminium  
Construction Anodised Aluminium

### Dimensions

Depth 60mm  
Length 3m  
Width 50mm

The **Inter Extrusion Profile** is used to house our LED tape.

Extrusion made from high quality, double-anodized aluminum, which has one compartment for a light source. The profile can accommodate LEDs (max. 3 or 4 LED strips of 12mm and 10mm each, respectively), as well as electronic equipment such as the power supply and controls.

One of the accessories offered for the extrusion are diffusers that shade and protect LEDs inside the profile. The extrusion consists of two elements: U (main component, in which you install electronic equipment) and Z (rail fixed to the surface). Combining both elements is done by a snapping the two components.

### Application

This profile is used in the production of various types of lighting fixtures for ceiling mounting illuminating down. The design of the extrusion allows you to hide electronic equipment inside, so we get a wide range of applications, e.g. illumination of pedestrian lanes running along walls or ceilings, hotel or office corridors, stairs, etc.

### Parts Required

#### Extrusions

As many lengths of extrusion can be used as is desired. Any piece can be positioned end to end with each other to make an unlimited distance.

#### Endcap

An Endcap is required for each circuit of extrusions being used. It is positioned at each end of the extrusion in the circuit and is used to stop dust from and moisture from interfering with the electrical components.

#### Diffuser

A diffuser is used to give the light a more even blend. Simply purchase the same amount of diffusers as you did with extrusions.