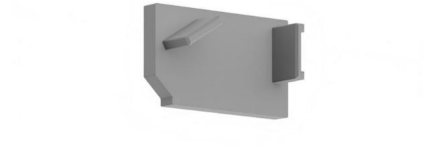


LED Tape Extrusion Profile Accessories

Micro 30° Endcaps

Grey Left



MICRO30 KOZ ENDL

Grey Left

Quicklink: Q6DD6

General

Colour	Grey
Construction	Plastic

The **Micro 30° Surface Endcap** is used in conjunction with the *Micro 30° Recessed Extrusions Plaster In* for an Aesthetic finish and protection of the interior of the lighting fixture.

Its purpose is to seal up the furthest end of the extrusion to ensure small objects such as dust cannot enter the fitting to interfere with the electrical components inside.
