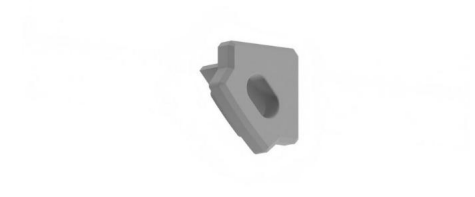


# LED Tape Extrusion Profile Accessories

Piko-45 Power End cap  
Grey

---



## PIKO-45 POWEREND

Grey  
Quicklink: Q6D37

---

General  
Construction      Plastic

The **Piko-45 Power Endcap** is used in conjunction with the *Piko Surface Extrusions*.

Its purpose is to seal up the starting end of the extrusion, whilst leaving a small hole to allow a cable to be inserted through to the first piece of tapelight. This is to ensure small objects such as dust cannot enter the fitting to interfere with the electrical components inside.

Only 1 endcap is required for each circuit of Tapelight. This means that if you buy 2 x 2m of extrusion, you would only need an endcap on the final piece.

---