

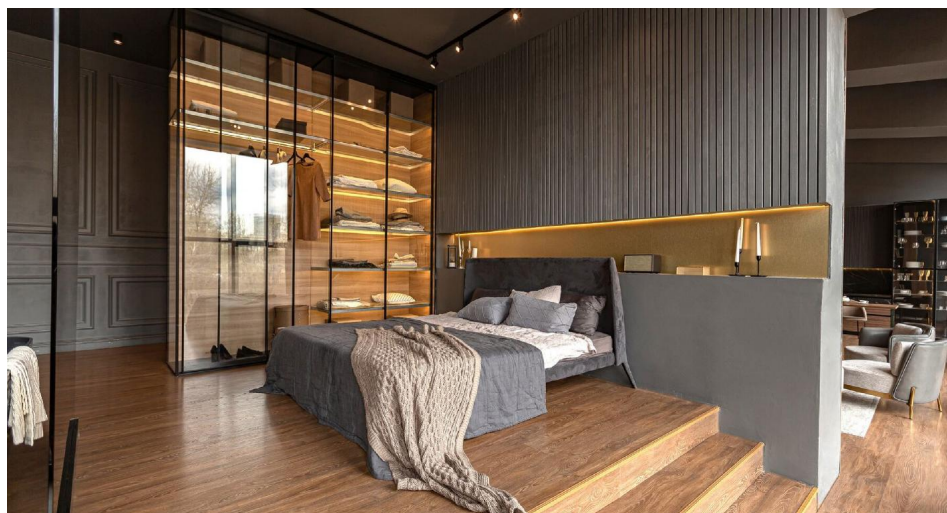
Maxi 45 LED Extrusion Profile - Corner Cabinet

Maxi 45° Surface LED Tape Extrusion Profile

Aluminium 1000mm



MR. RESISTOR®
Lighting Specialist Est. 1968



MAXI 45 ALU 1M

Aluminium 1000mm

Quicklink: Q6D17

General

Colour	Aluminium
Construction	Aluminium

Dimensions

Depth	19mm
Length	1m
Width	19mm

The **Maxi 45° Surface Extrusion** comes in 1m lengths and is used to house LED tape, which keeps the tape light safe and out of the way.

For mounting on surfaces and in internal 90° corners. For construction of directional lighting fixtures

Key Features

- The extrusion directs light at a 45-degree angle
- Good heat dissipation
- Ability to create a line of light
- Designed to reach an IP67 waterproof rating

Parts Required

Extrusions

As many lengths of extrusion can be used as is desired. As many 2m pieces can be positioned end to end with each other to make an unlimited distance.

Endcap

An Endcap is required for each circuit of extrusions being used. It is positioned on the end of the very last extrusion in the circuit and is used to stop dust from and moisture from interfering with the electrical components.

Powerend

An Powerend is required for each circuit of extrusions being used. It is positioned on the very first extrusion in the circuit and serves the same purpose as the Endcap. The powerend has a hole in the centre which allows a cable to be fed through to power the strips.

Diffuser

A diffuser is used to give the light a more even blend. Simply purchase the same amount of diffusers as you did with extrusions.

Will fit any tape with a maximum width of 10mm.

Maxi 45 LED Extrusion Profile - Corner Cabinet

Maxi 45° Surface LED Tape Extrusion Profile
Aluminium 1000mm



MR. RESISTOR®
Lighting Specialist Est. 1968

This extrusion has not been anodized. Diffuser not included

