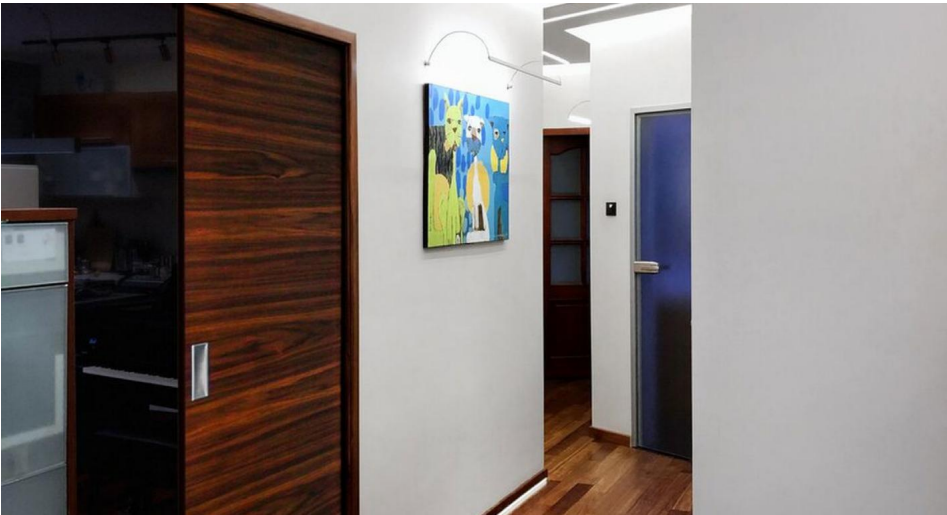


# Nisa LED Extrusion Profiles - Shadow Gap

NISA-KRA Shadow Gap LED Tape Extrusion Profile

Aluminium 3m



## NISA-KRA KPL 3M

Aluminium 3m

Quicklink: Q5363

### General

Colour	Aluminium
Construction	Aluminum

### Dimensions

Height	17mm
Length	3m
Width	57mm

**NISA-KRA** is a set of two extrusions designed for recess illumination purposes. It consists of a mounting strip a extrusion recessed in it. The complete set enables the parallel direction of light to the wall, facing up. The strip is step-shaped, which makes possible drywall edge mounting. The lower edge of the strip is an extension of the recess, and once sealed, forms a thin aesthetic edge.

The extrusion profile holds a single 10.8 mm max. wide LED. The strip enables the extension of the drywall recess and serves as a horizontal fixing element for the extrusion.

The mounting strip is drywall mounted using mounting screws.

**NOTE!** Prior to mounting, the strip must be pre-drilled to avoid unwanted deflection. The manual provides all details of mounting methods and direction of screw mounting. Once mounted, seal the lower edge of the strip. Rigid mounting of the extrusion can performed with a silicone cord (included in the set).

## Product Installation Video