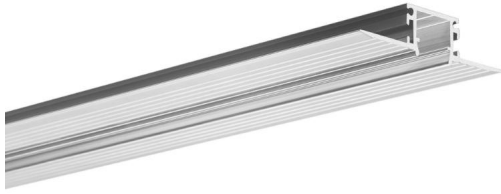


Kozma LED Extrusion Profile - Plaster-In Ceiling

Kozma LED Tape Extrusion Profile Plaster-in
Aluminium 2000mm



MR. RESISTOR[®]
Lighting Specialist Est. 1968



KOZMA 2M

Aluminium 2000mm

Quicklink: Q48BB

General

Construction Aluminium

Dimensions

Depth 13.5mm
Length 2m
Minimum Ceiling Depth 11mm
Width 56mm

The **Kozma Extrusion Profile** is a slimmer profile for installation in drywalls, ceilings or grooves. The exposed aluminium wings can then be plastered over and painted to leave an elegant line of light. Creative compositions of narrow lines of light can be produced in the surfaces of walls and ceilings.

The Kozma profile can be fixed in pre-made grooves and fitted in drywall using mounting adhesive. Before fixing the profile in drywall, you should take care to lead the power cables out. They can be fed into the profile by cutting a hole in the aluminium or end cap. After the glue dries, cover aluminium collars thinly with a suitable adhesive, put the drywall mesh on, fill all and when dry, polish it in such a way that it does not affect the base edge of the profile. Finally, apply paint over the base edge of the profile.

