

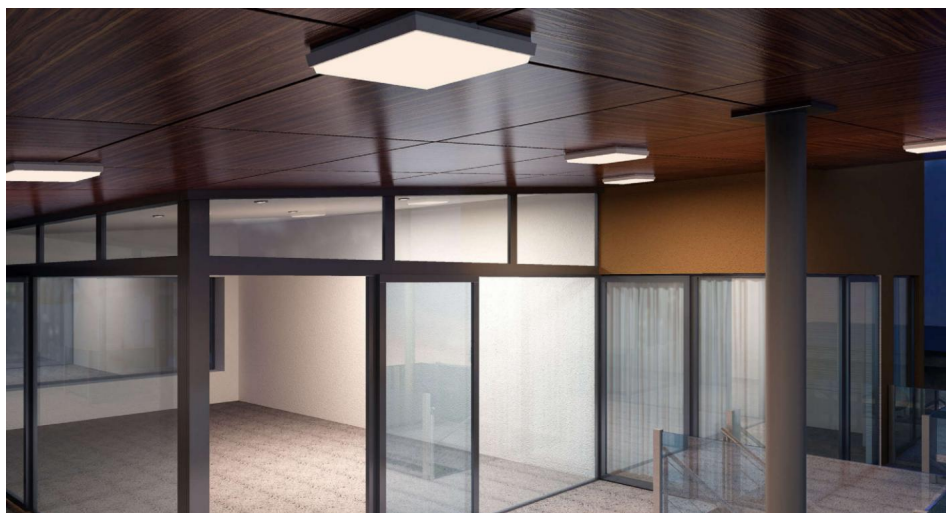
# Flush Mount Square

Flush Mount Square 20W

Large 3000K Warm White



**MR. RESISTOR®**  
Lighting Specialist Est. 1968



## R3400L SQ WHT/WW

Large 3000K Warm White

Quicklink: Q4305

The Flush Mount Square 240V comes in small, large and extra large. With a 1 x 10W LED driver included. Die casting aluminium opal diffuser.

Can be installed as a wall or ceiling light both interior and exterior.

### General

Colour	White
Construction	Aluminium
Dimmable	No
IP Rating	IP54

### Dimensions

Depth	45mm
Height	240mm
Width	240mm

### Electrical

Maximum Wattage	20W
Voltage	240V

### Light Characteristics

Colour Temperature	3000K Warm White
Lumens	2300 lm
Lumens Per Watt	115 lm/W

# Flush Mount Square

Flush Mount Square 20W  
Large 3000K Warm White



**MR. RESISTOR®**  
Lighting Specialist Est. 1968

