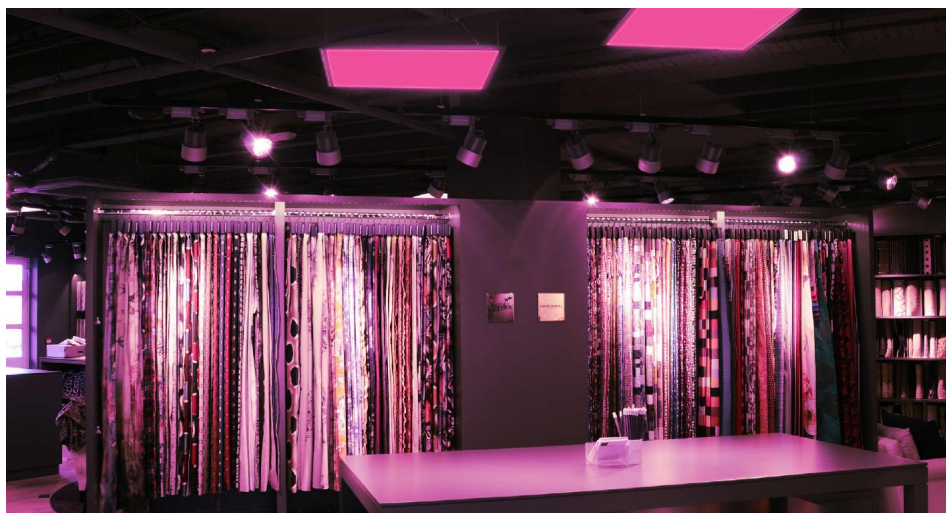


LED Panel RGB

RGB LED Panel Surfaced Box Black Kit 24V 600 x 600mm
RGB 23W



MR. RESISTOR®
Lighting Specialist Est. 1968



LED PANEL 623W SMB RGB

RGB 23W

Quicklink: Q4160

General

Colour	Black
Construction	Aluminium
Dimmable	Yes
IP Rating	IP54

LED Type	SMD5050
Number of LED's	96
Operating Temperature	-20°C - +40°C

Dimensions

Depth	80mm
Length	600mm
Width	600mm

Electrical

Maximum Wattage	23W
Voltage	24V

Light Characteristics

Beam Angle	150°
------------	------

The LED Panel RGB Surfaced Light box range features the latest in LED technology. The panels are suitable for commercial and domestic applications, included with the LED Panel is a surfaced mounting box for ceilings in which panels can't be recessed into the ceiling. These panels are ideally suited for office lighting and for meeting rooms and corridors.

This Kit includes 24V driver and a RGB LED Touch Panel Controller, dimmable drivers are available as additional option. Power cord is 40cm long, to extend a 2m, 5m or 10m coupler is required.

Maximum 8 panels per Wise Receiver.

Key Features

- Energy savings up to 70%-80% compared to fluorescent equivalent
- Instant start, no flickering or humming
- Compatible with RF, DMX, infrared
- No electric wave
- Excellent thermal management and refined aluminium
- Mercury free
- No RF interference