

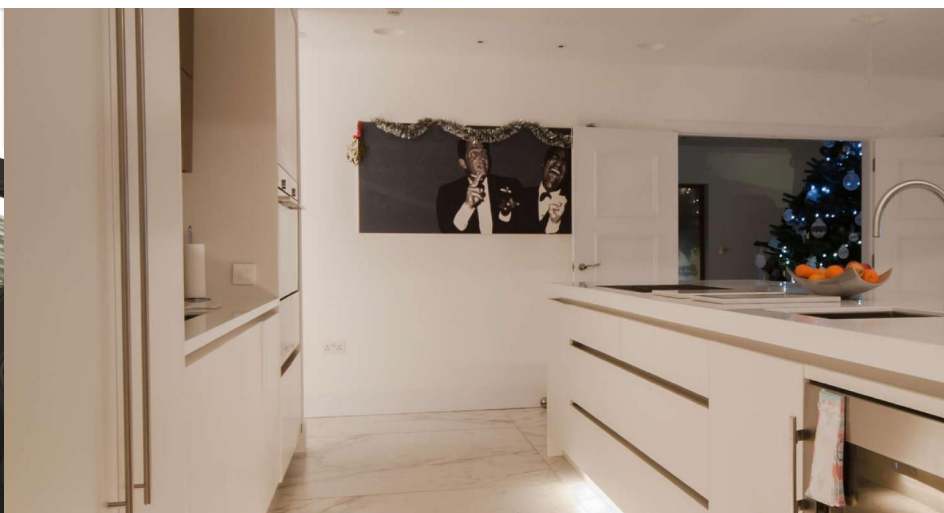
LED Tape RGB White 19.2W 24V

LED Tape RGB + Cool White 5m (60xSMD 5050 LEDs/m) 24V

96W (1m=19.2W) RGB + 4000K Cool White



MR. RESISTOR®
Lighting Specialist Est. 1968



TAPE500RGB/CW

96W (1m=19.2W) RGB + 4000K Cool

White

Quicklink: Q4055

General

Construction	Plastic
IP Rating	IP20

LED Chip	SMD 5050
LED per Tape	300
Maximum Connection	5000mm

Dimensions

Cut Length	100mm
Height	2.4mm
Length	5m
Width	12mm

Electrical

Maximum Wattage	96W
Voltage	24V

Light Characteristics

Beam Angle	120°
Colour Rendering Index	80
Colour Temperature	4000K Cool White
Lumens	3925 lm
Lumens Per Metre	785 lm/m
Lumens Per Watt	41 lm/W
Watts Per Metre	19.2 W/m

LED Tape is a versatile light source with a wide range of uses that can be either decorative or functional. Easy to install with pre-fitted double-sided backing tape and can be cut to a specific length.

Anything from a short linear run of light for under cabinet or plinth lighting, shelving or back lighting mirrors to large scale applications such as low level lighting in corridors, dropped ceilings, cove lighting, doorways, handrails and staircases can be achieved. A wide range of extrusions and diffusers are available to suit any location and produce different effects. For example a continuous, seamless line of light can be created when mounted in Maxi extrusions combined with Liger diffusers.

RGB + White LED tape has 60 leds per metre, unlike RGB LED tape has four LED chips of different colours (RGBW stands for red, green, blue, white). Once installed, you'll be able to select any shade in the spectrum by mixing red, green and blue along with the option of a warm white light from dedicated white LEDs.

This LED tape is dimmable. Ensure the dimming driver you use exceeds the total wattage of the LED Tape.

Luminous flux:

- red 110 Lumen per m
- green 260 Lumen per m
- blue 100 Lumen per m
- white 315 Lumen per m
- r+g+b+w 785 Lumen per m