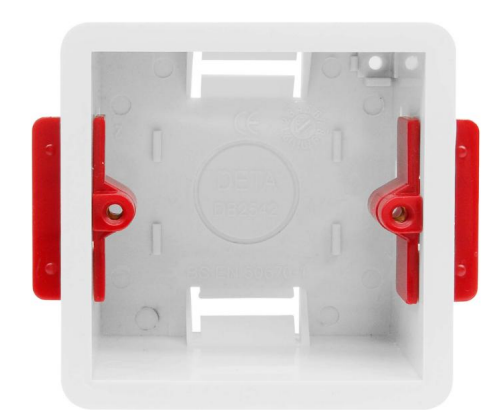


# Plastic Plasterboard Back Boxes

Single Plate Plasterboard Back Box  
Plastic 46mm

---



## DB2542

Plastic 46mm  
Quicklink: Q4037

---

Single plate plastic back box for switches and sockets requiring a shallow depth of 46mm for use in plasterboard walls.

### General

Construction          Plastic

Earth Point            No  
Knockouts            Yes  
Type                    Single

### Dimensions

Depth                   46mm  
Height                  83mm  
Width                   83mm

---