

# Trimless Grid Metal

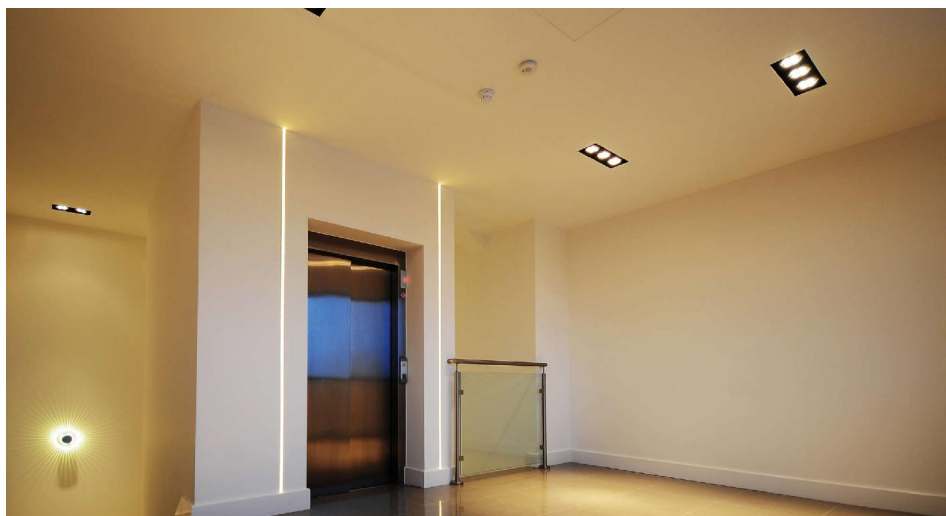
Grid Trimless Double Reality LED & Driver 2 x 13W Dimmable Warm White

(2700K)

24° Black



**MR. RESISTOR®**  
Lighting Specialist Est. 1968



## FRT200BLKAR111LED

24° Black

Quicklink: Q3E6B

### General

Cap	G53 / AR111
Colour	Black
Construction	Steel
Dimmable	Yes

### Dimensions

Cut Out	320 x 167mm (Length x Width)
Horizontal Rotation	45°
Minimum Ceiling Depth	104mm
Vertical Rotation	45°

### Electrical

Energy Efficiency Rating	A
Maximum Wattage	26W (2 x 13W)
Voltage	240V

### Light Characteristics

Beam Angle	24°
Colour Rendering Index	80
Colour Temperature	2700K Warm White
Halogen Equivalent Wattage	75W
Lumens	1900 lm
Lumens Per Watt	73 lm/W

The **LED Grid Trimless Double AR111** is an adjustable downlighter with two **13W Reality AR111 LED Lamps & Drivers**.

This product comes with a mounting ring which is designed to be fitted into the ceiling and plastered in before the light fixture is put into place. The downlighter fits into the hole in the ceiling and will rest on top of the mounting bracket. Once the light is fitted there will be no trim unlike the similar Grid Range of products.

The **Dimmable Reality AR111 LED 13W and driver** is an LED lamp that matches a halogen lamp in terms of light source and aesthetics. This is achieved with the use of a single Cree LED chip with a reflector built around it. The result is truly warm and gives that arc of light we are all used to seeing with halogen.

The AR111 Reality Lamp is equivalent to a 75W GU10 halogen lamp and, like a halogen lamp, is dimmable.

### Key Features

- Replicates halogen reflector
- LED positioned further back for anti glare
- Complies with October 2010 Part L regulations
- Fully dimmable with leading edge dimmers
- Equivalent to 75W AR111
- Fits AR111 lampholder
- Emergency option available
- Dali option available