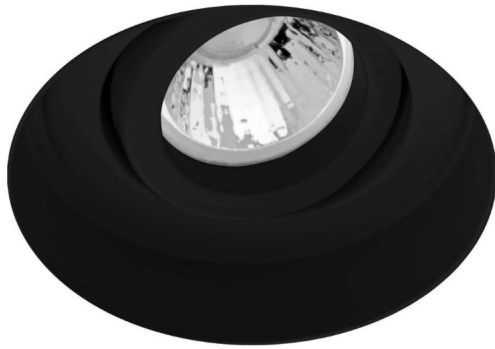


# Trimless Round Metal

Trimless Round Adjustable MR11 Downlight 12V  
Black 35W



**MR. RESISTOR**<sup>®</sup>  
Lighting Specialist Est. 1968



## FRTRDMR11 BLACK

Black 35W

Quicklink: Q3BC6

The **Trimless Downlight** is a fully adjustable downlight that is available in round or square, black or white. Using the different lampholders available you can select different light sources; Halogen, LED and Metal Halide. It is designed to be plastered into ceilings to give a **seamless** appearance. One of the advantages is that the downlight can be installed then plastered and painted.

### General

Cap	GU4 / MR11
Colour	Black
Construction	Die-Cast Aluminium / Steel Frame
Dimmable	Yes
IP Rating	IP20

### Dimensions

Cut Out	68mm (Diameter)
Diameter	62mm
Recessed Depth	22mm
Vertical Rotation	40°

### Electrical

Maximum Wattage	35W
Voltage	12V

# Trimless Round Metal

Trimless Round Adjustable MR11 Downlight 12V  
Black 35W



**MR. RESISTOR**<sup>®</sup>  
Lighting Specialist Est. 1968

## Trimless Downlights with LED MR11 Lamp

