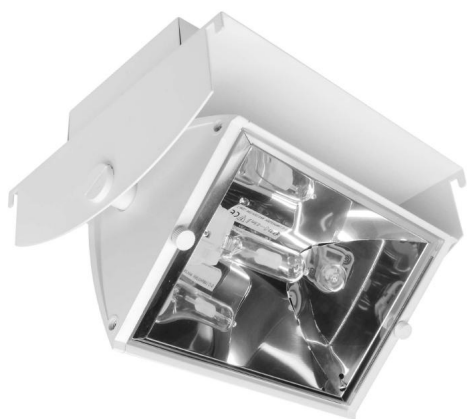


Multi Suspension Tray System Fittings

Multi Suspension CDMT Wall Washer 240V
70W White



MR. RESISTOR®
Lighting Specialist Est. 1968



097611460301 WHT

70W White

Quicklink: Q3B05

General

Cap	G12
Colour	White
Construction	Die-Cast Aluminium
IP Rating	IP20

Dimensions

Depth	150mm
Length	252mm
Vertical Rotation	30°
Width	190mm

Electrical

Maximum Wattage	70W
Voltage	240V

The **CDMT Wall Washer Tray Fitting** is a metal halide fitting for use with the Multi Suspension Tray System.

Easy to install and maintain, the Multi Suspension Tray System can be lined up continuously and in geometric forms. Ideal for shops, exhibition halls, showrooms and commercial areas. A power connection box is included in the fitting for easy wiring. Finished in white and constructed from die-cast aluminium.