

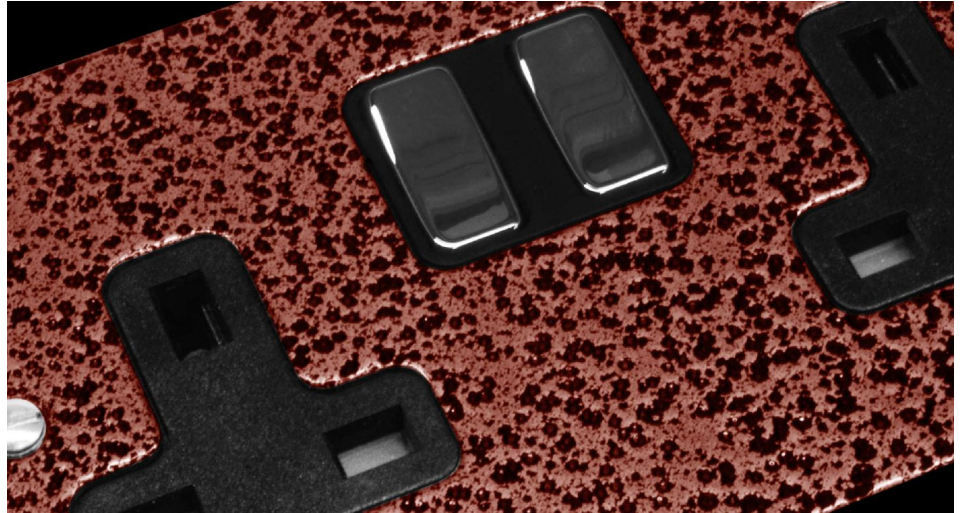
Flat Plate Beaten Metal Copper

Dimmer Switch

1 gang 400 watt 2 way Copper



MR. RESISTOR[®]
Lighting Specialist Est. 1968



COPDSW1

1 gang 400 watt 2 way Copper

Quicklink: Q3932

The Flat Plate Beaten Metal Copper range has a hard wearing, dual coloured coating finish with a black trim and black rocker insert as standard.

General

Colour Copper
Construction Aluminium

Dimensions

Height 86mm
Plate Depth 2mm
Width 86mm

Electrical

Voltage 240V