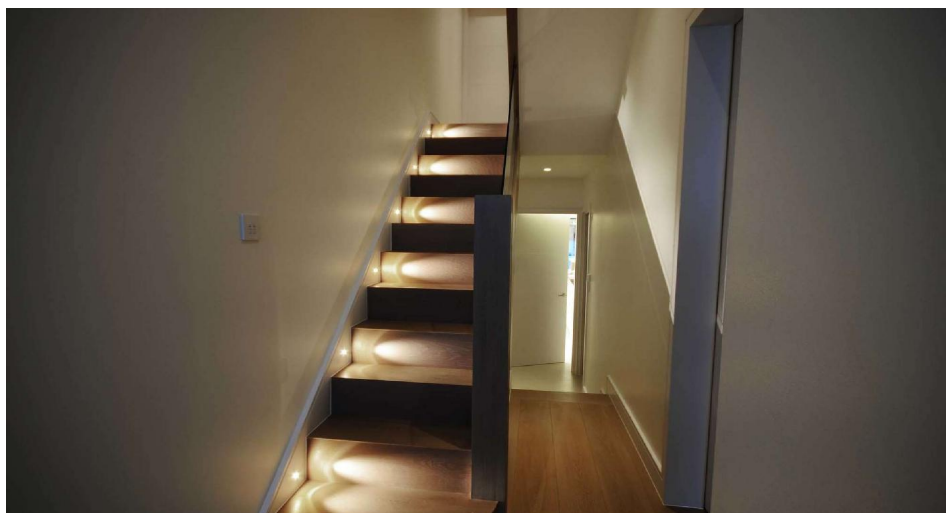


Petit Round

Petit Round Small Recessed 350mA
White 1W



MR. RESISTOR®
Lighting Specialist Est. 1968



AL2117 RD WHT WW

White 1W

Quicklink: Q3733

General

Colour	White
Construction	Steel
Dimmable	Yes
IP Rating	IP44
RAL Colour Code	RAL 9003

Dimmable	Yes
----------	-----

Dimensions

Cable Length	150mm
Cut Out	15mm (Diameter)
Depth	23mm
Diameter	20mm
Plate Depth	1mm

Electrical

Amperage	350mA
Maximum Wattage	1W

Light Characteristics

Beam Angle	5°
Colour Temperature	3000K Warm White
Lumens	80 lm
Lumens Per Watt	80 lm/W

The **Petit Round** is a miniature recessed low level wash light utilising a 1W LED super-bright light in a warm white colour temperature.

Manufactured from steel the Petit displays a 5 degree beam of light giving a subtle low-level lighting effect in walkways, in circulation areas and as a feature maker.

Please note: The cutout diameter will depend on what fixing clip you are using with this product.

Spring clips are included for plaster board installation, a burial tube is available separately for wall installation.

LED Driver Options

- Switching - Use this driver for on/off control. Cannot be used for dimming.
- Dimming - Normal - Use this driver for dimming control. Some dimmers may require a resistive dummy load to meet the minimum load requirements.
- Dimming - 1-10V - Use this driver with a 1-10V dimmer modules or control systems. This type of dimming does not have a minimum load.

Petit Round

Petit Round Small Recessed 350mA

White 1W



MR. RESISTOR®
Lighting Specialist Est. 1968

