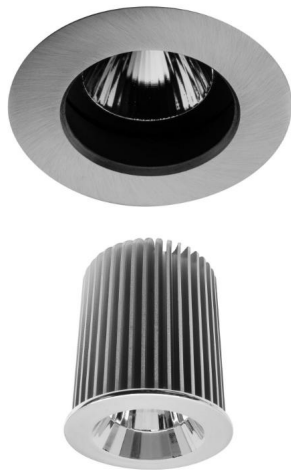


# Elegant

Elegant Fixed Downlight Reality LED Module Warm White (2700K)

10W (=100W) 45°



## MR2005 NKL/R45DPS

10W (=100W) 45°

Quicklink: Q366E

### General

Colour	Nickel
Construction	Die-Cast Aluminium
Dimmable	Yes
IP Rating	IP20

### Dimensions

Cut Out	62mm (Diameter)
Diameter	70mm
Minimum Depth	80mm

### Electrical

Maximum Wattage	10W
Voltage	240V

### Light Characteristics

Beam Angle	45°
Colour Temperature	2700K Warm White
Halogen Equivalent Wattage	100W
Lumens	900 lm
Lumens Per Watt	90 lm/W

The **50mm Fixed Downlighter** holds a 50mm lamp. The downlighter uses a spring retention system for easy installation and lamp changing. The **LED 10W module & Driver** is an LED module with 10W dimmable driver. The module has a diameter of 50mm that allows it to be fitted into a standard 50mm downlight. This module allows your halogen light fitting to have the low energy and long life benefits of an LED fitting. Included with the lamp is a 10W dimmable LED driver.

The Reality LED 10W Lamp is equivalent to a 100W GU10 halogen lamp and, like a halogen lamp, is dimmable.

### Key Features

- Complies with October 2010 Part L regulations
- Fully dimmable with leading edge dimmers
- Equivalent to 100W GU10
- 10W dimmable driver

# Elegant

Elegant Fixed Downlight Reality LED Module Warm White (2700K)  
10W (=100W) 45°

---

Dimensions using our LED Module

