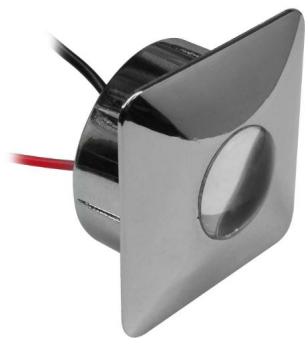


Bubble Square

Bubble Square LED
6000K Daylight 120°



LED BUBBLE1SQCCW

6000K Daylight 120°
Quicklink: Q2E2F

General

Colour	Chrome
Construction	Plastic
Dimmable	Yes
IP Rating	IP40
Weight	10g

Dimmable	Yes
----------	-----

Dimensions

Bezel Depth	2.3mm
Cut Out	25mm (Diameter)
Depth	10.3mm
Length	32mm
Width	32mm

Electrical

Amperage	350mA
Maximum Wattage	1W

Light Characteristics

Beam Angle	120°
------------	------

The **Bubble Square LED** is a versatile unit. It can be used separately or together with a light fitting. It incorporates a high power 1 watt LED and has a 25mm cut out. It is available in four different bezel colours and four different LED colours; amber, blue, cool white and warm white. These have a lumen output of 65, 27, 90 and 70lm respectively.

The lens produces an 120° angle of light. These are ideal for lighting stairs and small areas that require low power usage and a large dispersal of light.

Many different LED power supplies are available that allow you to achieve more with your lighting. Simply select the correct wattage depending on how many total LED fittings it will be connected to.

LED Driver Options

- Switching - Use this driver for on/off control. Cannot be used for dimming.
 - Dimming - Normal - Use this driver for dimming control. Some dimmers may require a resistive dummy load to meet the minimum load requirements.
 - Dimming - 1-10V - Use this driver with a 1-10V dimmer modules or control systems. This type of dimming does not have a minimum load.
-