

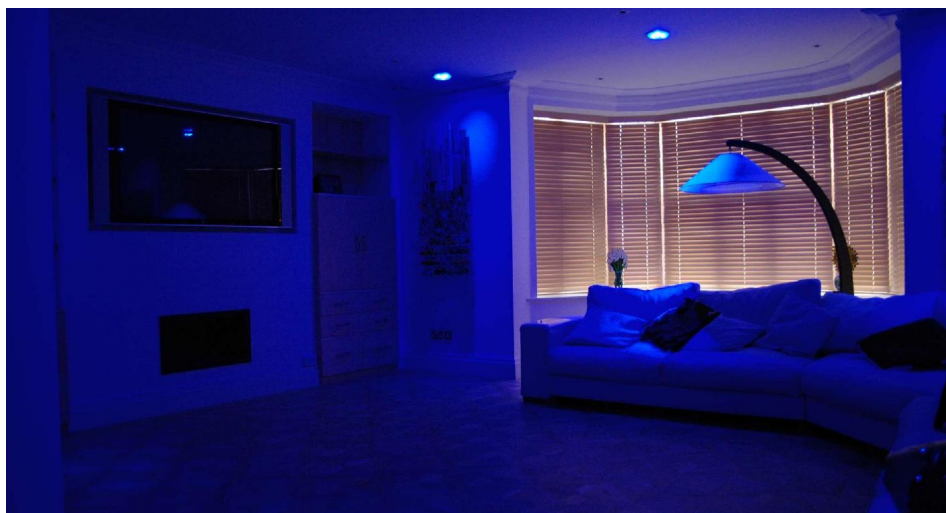
# Invisible Spider LED

Spider 350mA 15W

Black 4000K Cool White



**MR. RESISTOR®**  
Lighting Specialist Est. 1968



## DL7021 BLACK C/W

Black 4000K Cool White

Quicklink: Q2BB8

### General

Colour	Black
Construction	Steel
IP Rating	IP20

### Dimensions

Cut Out	145mm (Diameter)
Length	150mm
Minimum Ceiling	60mm
Depth	
Width	150mm

### Electrical

Amperage	350mA
Maximum Wattage	15W

The **Spider** is a LED downlight that is energy saving and conforms to Part L regulations. The fitting has 15 1W LEDs making it equivalent to a 139W mains lamp or 60W low voltage lamp. It is installed flush with the ceiling so just the light source is visible, for a contemporary modern feel.

Many different LED power supplies are available that allow you to achieve more with your lighting. Simply select the correct wattage depending on how many total LED fittings it will be connected to.

### LED Driver Options

- **Switching** - Use this driver for on/off control. Cannot be used for dimming.
- **Dimming - Normal** - Use this driver for dimming control. Some dimmers may require a resistive dummy load to meet the minimum load requirements.
- **Dimming - 1-10V** - Use this driver with a 1-10V dimmer modules or control systems. This type of dimming does not have a minimum load.